

2016

NORWAY

Renewal of a concrete batching and distribution plant for the production of precast concrete .

**Main technical features:**

- Max Concrete production : 60 cbm/h (for a batch each 3 min)
- Countercurrent mixers: 2x2250/1500 lt

- Aggregate silos : 8x45 cbm
- Cement silos : 2x42 cbm
- Silika silo 1x28 cbm
- Additives: 6x1600 lt

- Bucket conveyors : 2 x 1,5 cbm
- Max speed : 160 mt/min
- Rails length track 1: 135 mt
- Rails length track 2: 245 mt
- Concrete discharge stations : 7

- Automatic washing system : 110 bar

- Concrete recycling : 12 cbm/h

- Microwave moisture metering of concrete : 2 pcs
- Microwave moisture Metering for sand : 4 pcs

- Insulation panels :
- Wall panels 120 mm : K=0,200
- Roof panels 120+35 mm : K=0,169

- Production control system:

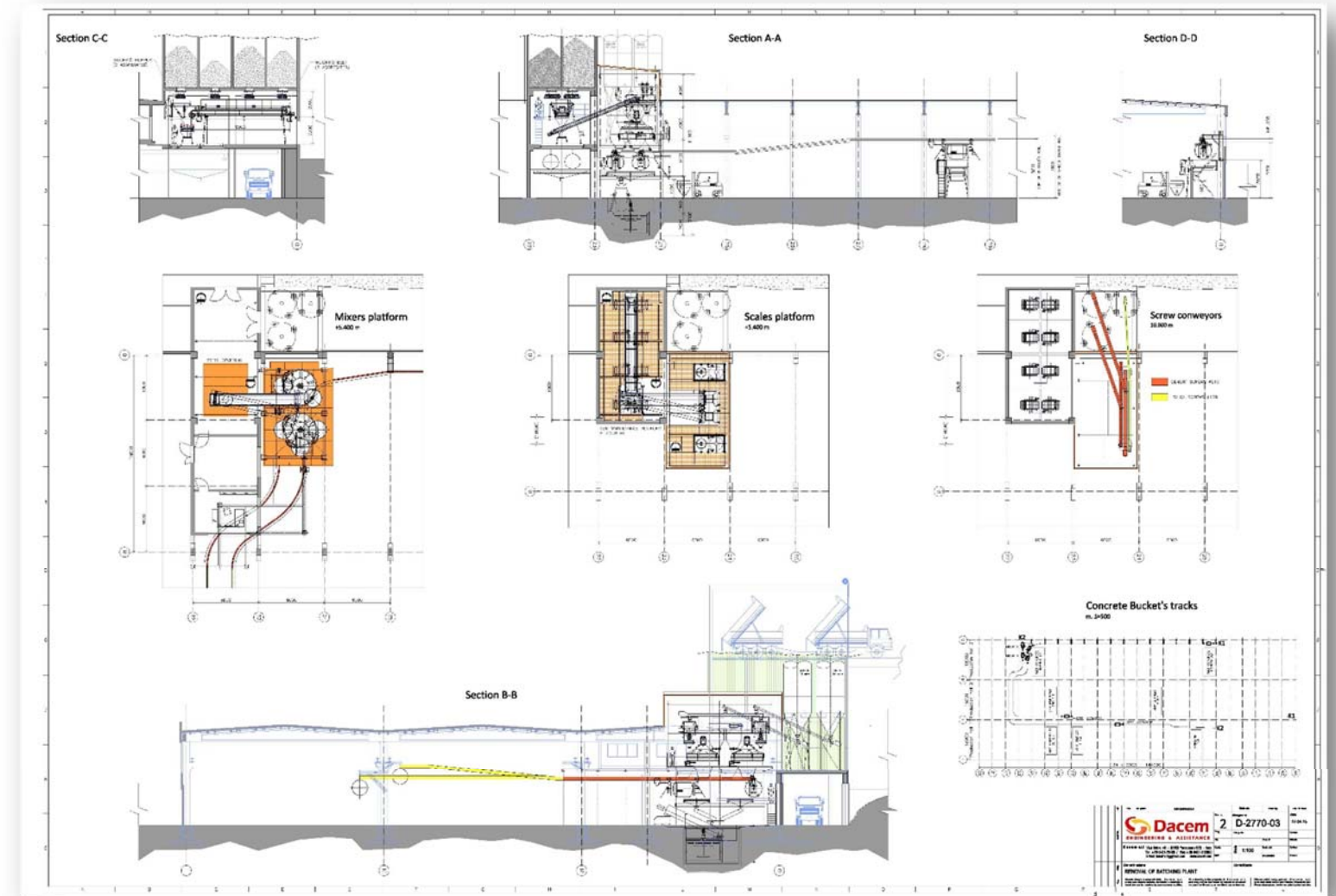
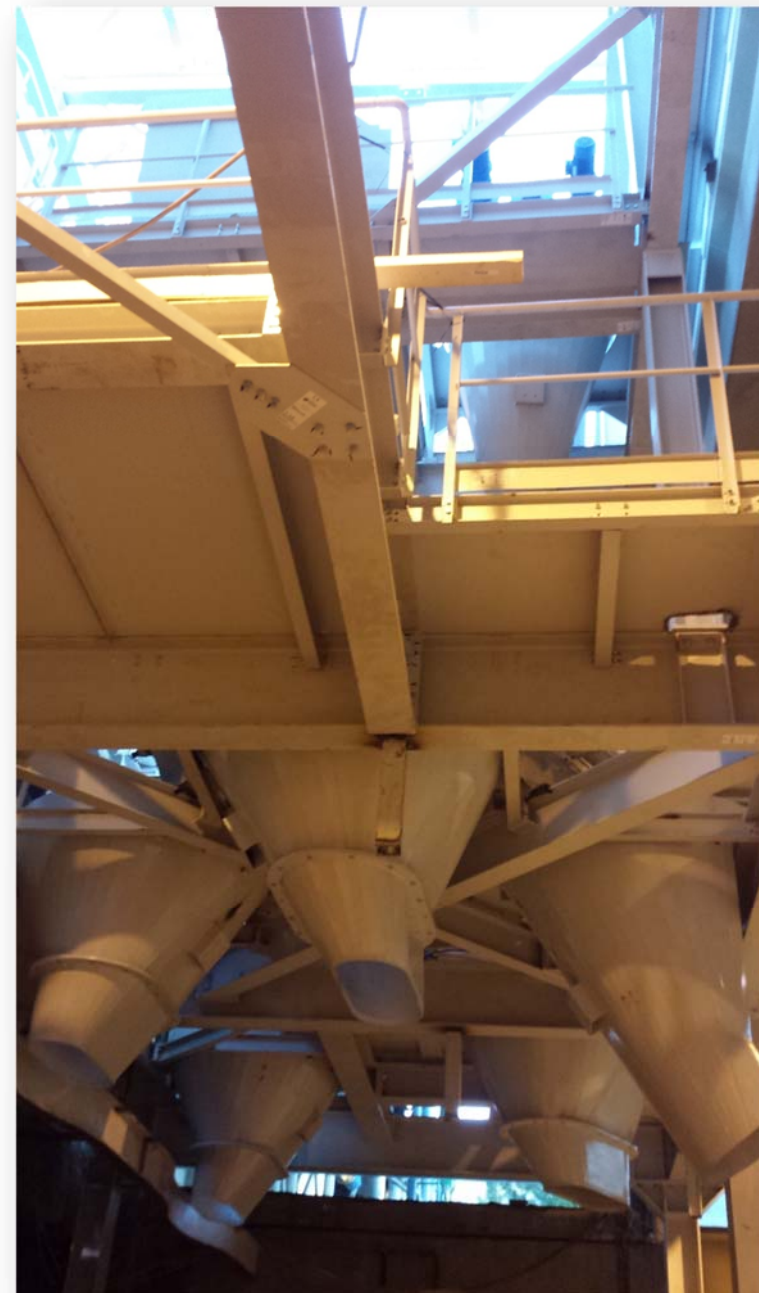
- Software programs for:
- Dosing and mixing control for precast products production.
- Bucket conveyors control.
- Loading and safety control system for cement loading.
- Automatic washing system for mixers and bucket conveyors.
- Recycling system for washing process water.

- Receptions statistics
- Production Statistics

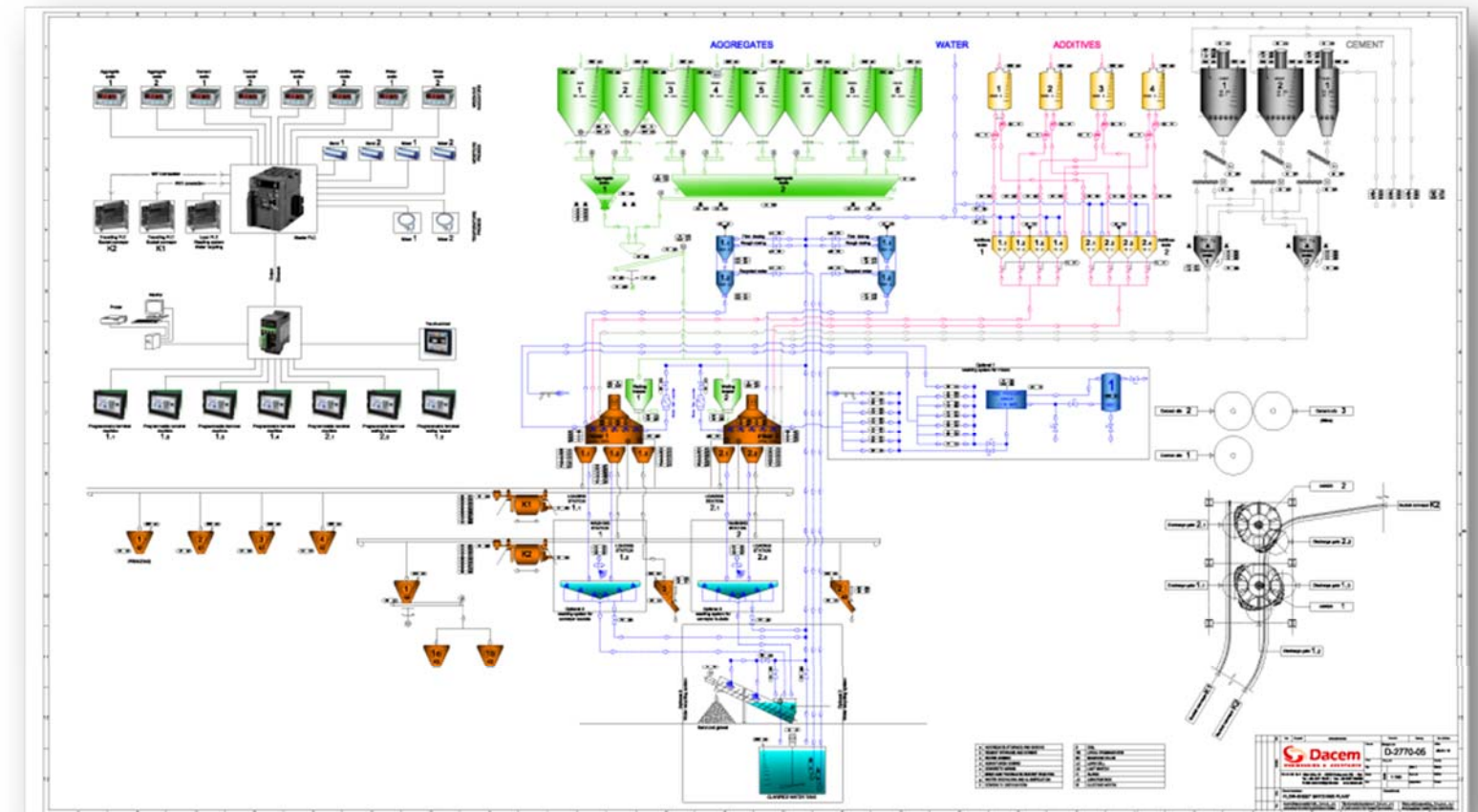
- 1 External control box for selection of Cement and silika destination.
- 2 External control box for the control of mixers.
- 7 External control boxes for concrete delivery on the production machines.



Mixer's platform with 2 countercurrent mixers PGM 2250 / 1500



Lay-out drawing of new batching and distribution plant



Flow-sheet drawing of the batching and concrete distribution plant